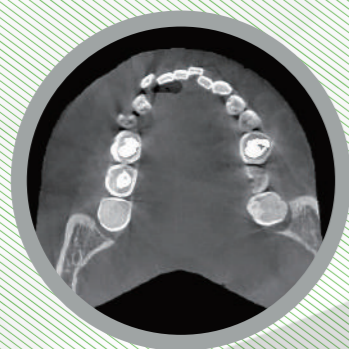


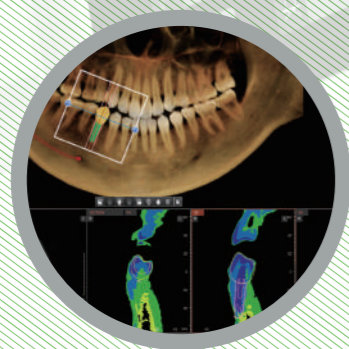
1 SCAN, 2 IMAGES



ANATOMICAL FOV 12x9

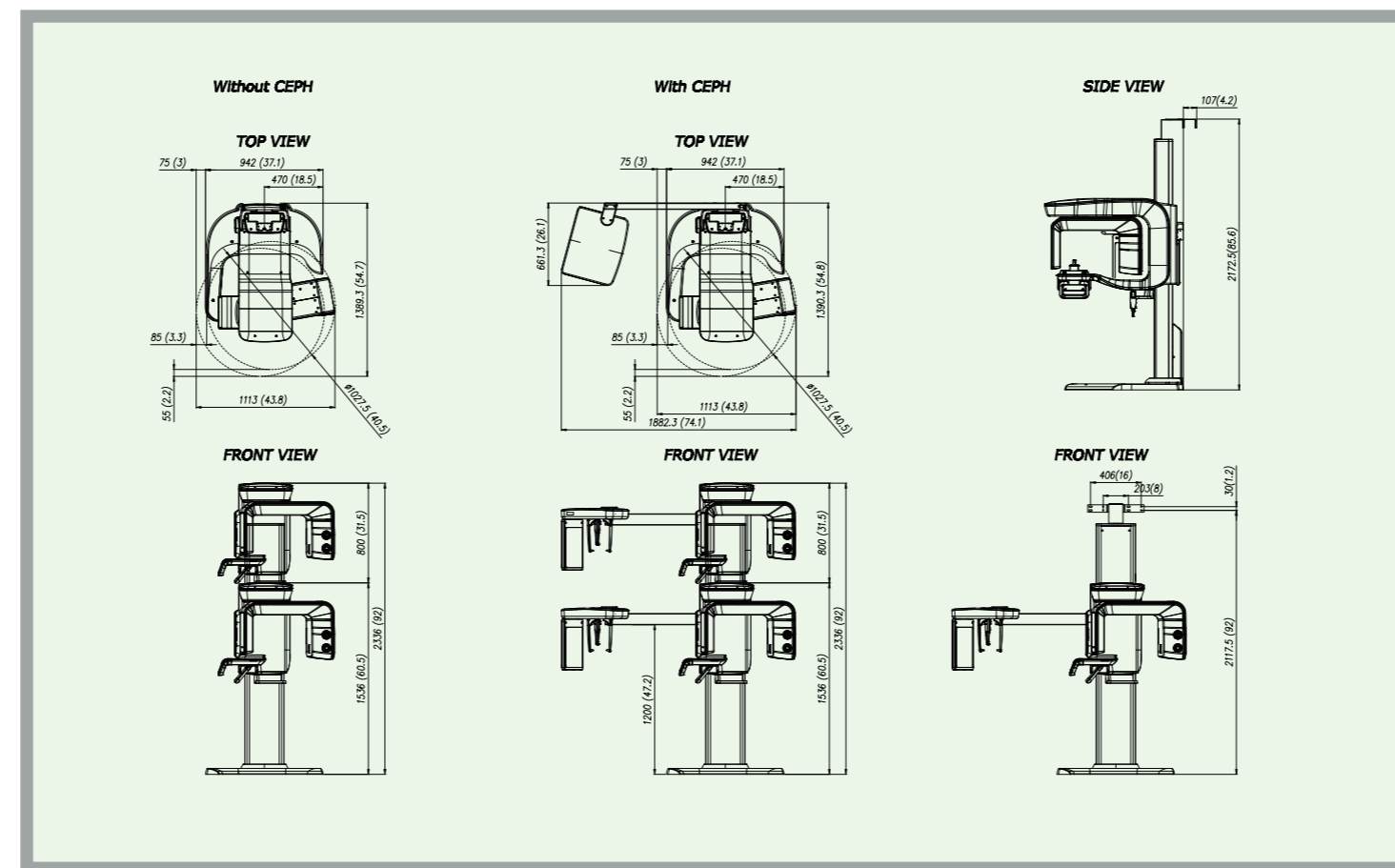


ART-V



REAL 3D SOFTWARE Ez3D-i

**Dimensions** [Unit: : mm (inches)]



**Product Configuration**

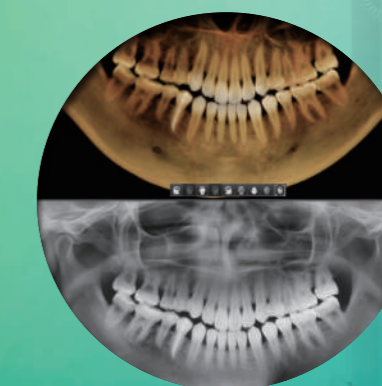
	CBCT	PANO	CEPH
Green Smart	•	•	
Green Smart SC	•	•	•

**Specifications** (Green Smart : PHT-35LHS)

Function	CT[with Auto Pano] + Pano + Ceph + Model Scan	
Focal Sport	0.5 mm (IEC 60336)	
CT FOV Size	10x8.5 / 10x7 / 5x5	
Voxel Size	0.08 / 0.12 / 0.2 / 0.3	
Scan Time	CT	18 sec
	Pano	14.1 sec / 7 sec[Optional with Magic PAN]
	Ceph	1.9 sec / 3.9 sec
Gray Scale	14 bit	
Tube Voltage	60 ~ 99 kV	
Current	4 ~ 16 mA	
Weight	Without Ceph unit	137 kg [302.0 lbs]
	With Ceph unit	162 kg [357.1 lbs]

\* The specifications are subject to change without prior notice.

THE OPTIMUM CHOICE  
FOR IMPLANTOLOGIST



GREEN SMART

1 Scan  
2 Images

### Powerful diagnostic value with 1 Scan 2 Images

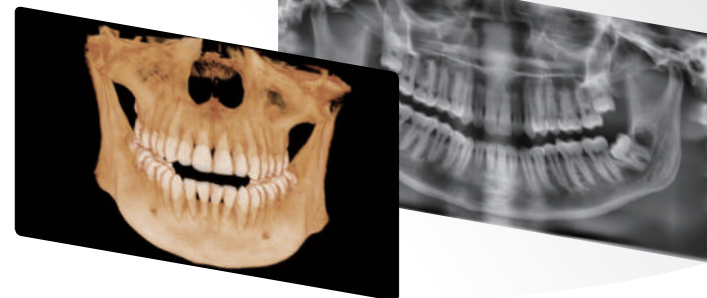
One scan with Green Smart gives you not just a CT image but also Auto Pano image. This means, patients who require both images do not need to undergo two X-ray scans. Also, CT with Auto Pano images are displayed within One Viewer.

Since the Auto Pano is created automatically from the 2D projections of the RAW data, there is no need to manually reconstruct the image.

#### • Value-added Auto Pano Selection



Select the Auto image if you need it for your treatment.



※ Conventional panorama mode is also provided.

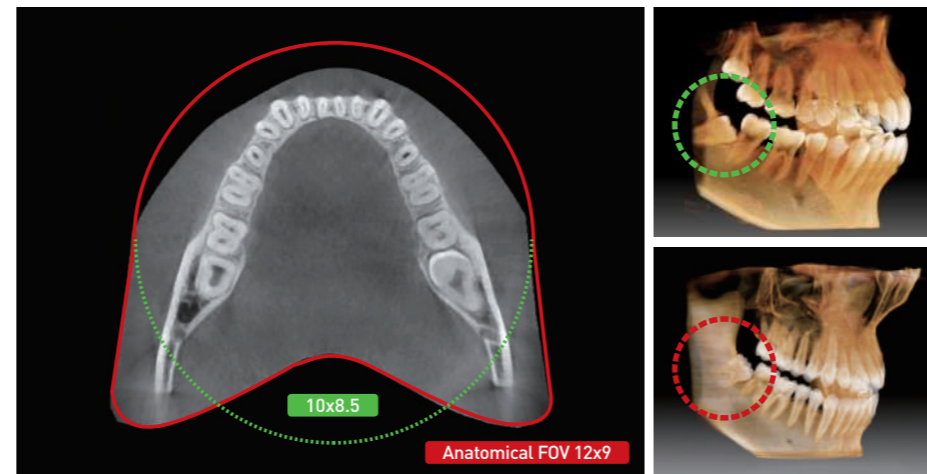
#### • 2D and 3D in One Viewer

Viewing 2D and 3D images together provides many benefits. There is no need to utilize two different software programs and the One Viewer feature presents a professional look for your patients. This layout helps patients better understand the images, which will eventually result in increasing acceptance rates.



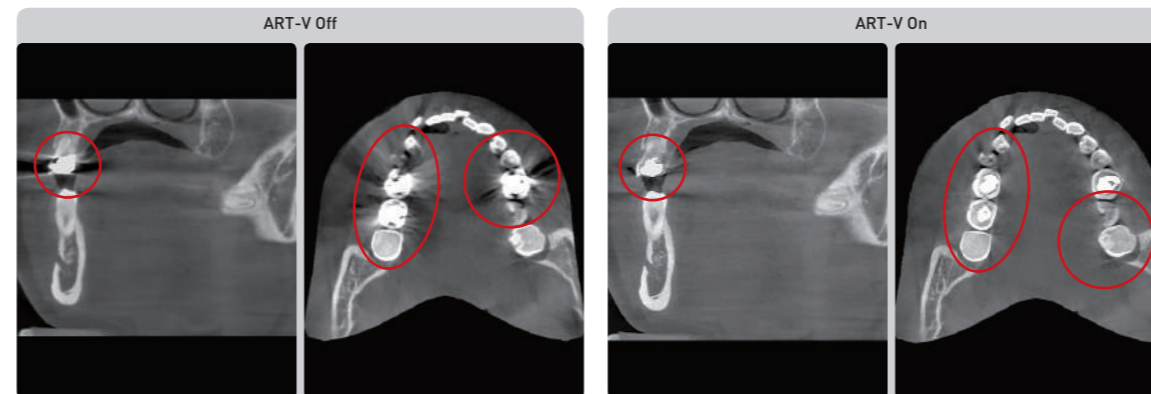
### Anatomical FOV 12x9 improves treatment outcomes

The innovative FOV of the Green Smart provides an arch-shaped volume, which shows a wider view of dentition compared to other devices of the same FOV. Normally, a FOV 10x8.5 image shows tooth #8. However, when the tooth is lying on its side, there is a high possibility that the tooth will be cut out of the image. The "arch-shaped volume" eliminates this possibility and shows the hidden dentition area.



### The ART-V\*

Metal artifact hinders visualization and naturally reduces diagnostic confidence. Clear images give you less stress and more confidence. Leads to accurate diagnosis for implant planning. No extra effort to create surgical guide.



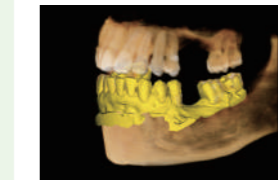
\*ART-V is the new name of VATECH's MAR function. (Artifact Reduction Technology of VATECH)



### 3D Scanning for Model

3D model scan enables users to store plasters as digital models for ease of anagement.

#### • Digitized One-stop Clinic



#### [ CAD/CAM integration ]

- Sufficient level of detail for surgical guide design



#### [ Specially designed Jig ]

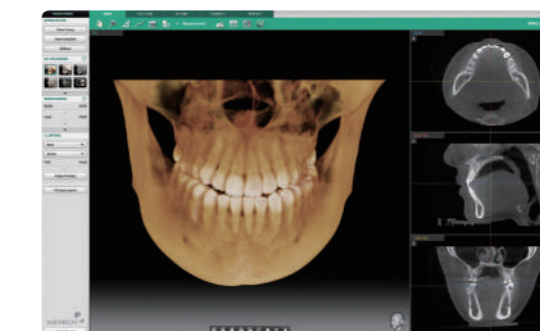
- Stable platform for partial model to full model scanning

※3D scanning for Plaster Cast with FOV 10x8.5 (cm)



### Quick and Easy 3D Dental Imaging Software, Ez3D-i

Ez3D-i provides a wide array of functions designed to streamline the dental workflow. It conveniently performs specialized diagnosis and consultation via our easy-to-use user interface.



	<b>Diagnosis</b>	<ul style="list-style-type: none"> <li>• High Quality VR</li> <li>• Smart Clipping</li> <li>• One Click Section</li> </ul>
	<b>Simulation</b>	<ul style="list-style-type: none"> <li>• 3-Step Implant Simulation</li> <li>• Top-down Implant Simulation</li> <li>• Implant Collision Detector</li> </ul>
	<b>Consultation</b>	<ul style="list-style-type: none"> <li>• Implant Clipping</li> <li>• 3D Bone Density</li> <li>• EzCodi</li> </ul>

#### • Auto Cross-sectional [3D PAN] Tab

The [3D PAN] Tab of Ez3D-i makes everything quick and smart. With a volume panorama mode, Ez3D-i makes lingual-side diagnosis possible. Also, locating a lesion during an endodontic treatment is effective and accurate from this view, whether it is near the apical or not.

